

VICTOR STEINBRUECK PARK RENOVATION

Open House 2, Tuesday October 4th 2016



Open House #2 - Oct. 4, 2016

WALKER | MACY

AGENDA

6:00 Introduction

6:05 Presentation

6:30 Q&A

6:40 Open House

Online Open House: <https://vspark.participate.online/>

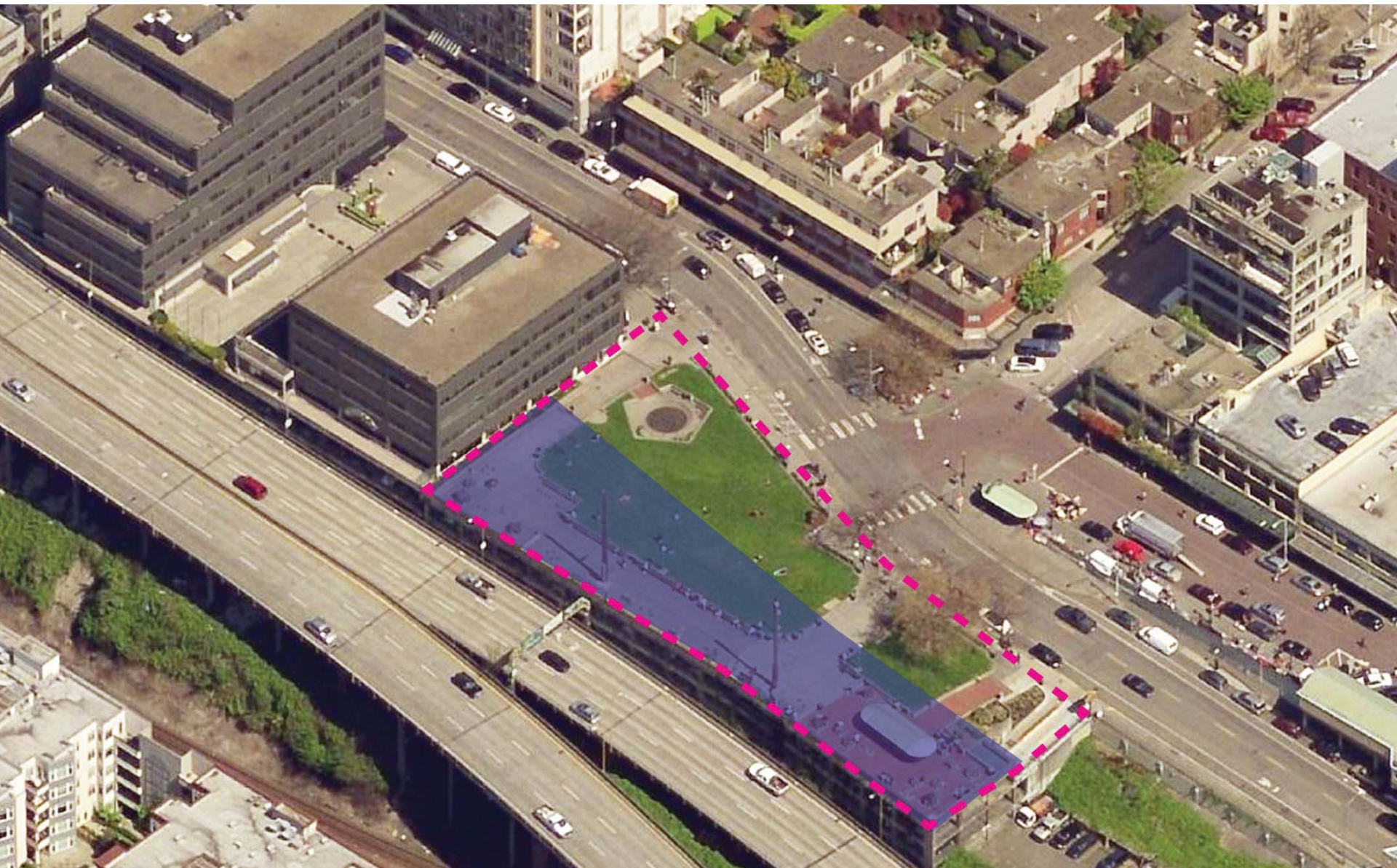


PRO PARKS LEVY RECOMMENDATION

2008 Levy Recommendations:

- improving sight lines into the park
- renovating seating
- renovating the former children's play area*
 - *The play area has since been dedicated as a gathering space and sculpture to remember homeless men and women*
- improving and expanding lighting
- upgrading landscaping

PARK ON STRUCTURE



PROCESS



CITY CONTEXT



HISTORICAL COMMISSION GUIDELINES

- The park's character-defining features should be retained
- Character-defining features include the **berms** and their **concrete walls, decorative railing, totem poles, shelter, children's council circle/pentagon, benches and seats, original planting and landscape plan, original lighting fixtures, plazas** and **walkways**
- The addition of new features is strongly discouraged

Pike Place Market Historical Commission
Revised Guidelines - adopted November 13, 2013

PIKE PLACE MARKET DRC BRIEFINGS

- **DRC Design Briefing 1 (7/6/16)**
- **Peter Steinbrueck Briefing to Pike Place Market Historical Commission (7/29/16)**
- **DRC Design Briefing 2 (8/8/16)**
- **DRC Design Briefing 3 (9/3/16)**
- **MarketFront Briefing (9/9/16)**



COMMUNITY ENGAGEMENT



- MarketFront PDA
- MarketFront Foundation
- Downtown Seattle Families
- Seattle Department of Planning and Development
- Seattle Police Department
- West End Neighborhood Group
- Neighboring Condominiums
- Women in Black
- Chief Seattle Club
- Tribe specific notices:
 - Muckleshoot
 - Suquamish
 - Duwamish
- Market Merchants
- Friends of PPM
- Real Change
- Heritage House and Stewart House
- Market Security

NATIVE AMERICAN COMMUNITY ENGAGEMENT

LET US KNOW
"Speak the Truth"
Please share your suggestions for the park design.
(Yes or No about the following)

no **1** Incorporate Native American Art in someway **yes**

no **2** Incorporate Native American live storytelling program in someway **yes**

*"...You can't go back. We must live in this modern world and do what we can to keep it livable."
—Billy Frank*

- Chief Seattle Club (12/15/15)
- Tribal Relations (1/7/16)
- Chief Seattle Club Focus Groups (January 26th + August 12-19)
- Seattle Indian Health Board (August 12-19)
- Seattle Urban Native Leadership Roundtable (8/17/16)
- Tribe specific notices:
 - Muckleshoot
 - Suquamish
 - Duwamish

OPEN HOUSE 1 & POP UP EVENT



Open House #2 - Oct. 4, 2016

OPEN HOUSE 1 PRIORITIES

1 Which are most important to the park's legacy and future success?

1.Connectivity

2.Socializing & Eating

3.Native American Culture

4.Gathering

5.Play

Public Open House, Pop Up and Online Survey Results
May 2016

ORIGINAL PARK DESIGN



PLAY

ORIGINAL DESIGN

1982



PRESENT

“Tree of Life” installed 2012



OPEN HOUSE 1 - PLAY

1 Should the renovation include a small play area for young kids?

yes
132

no
60

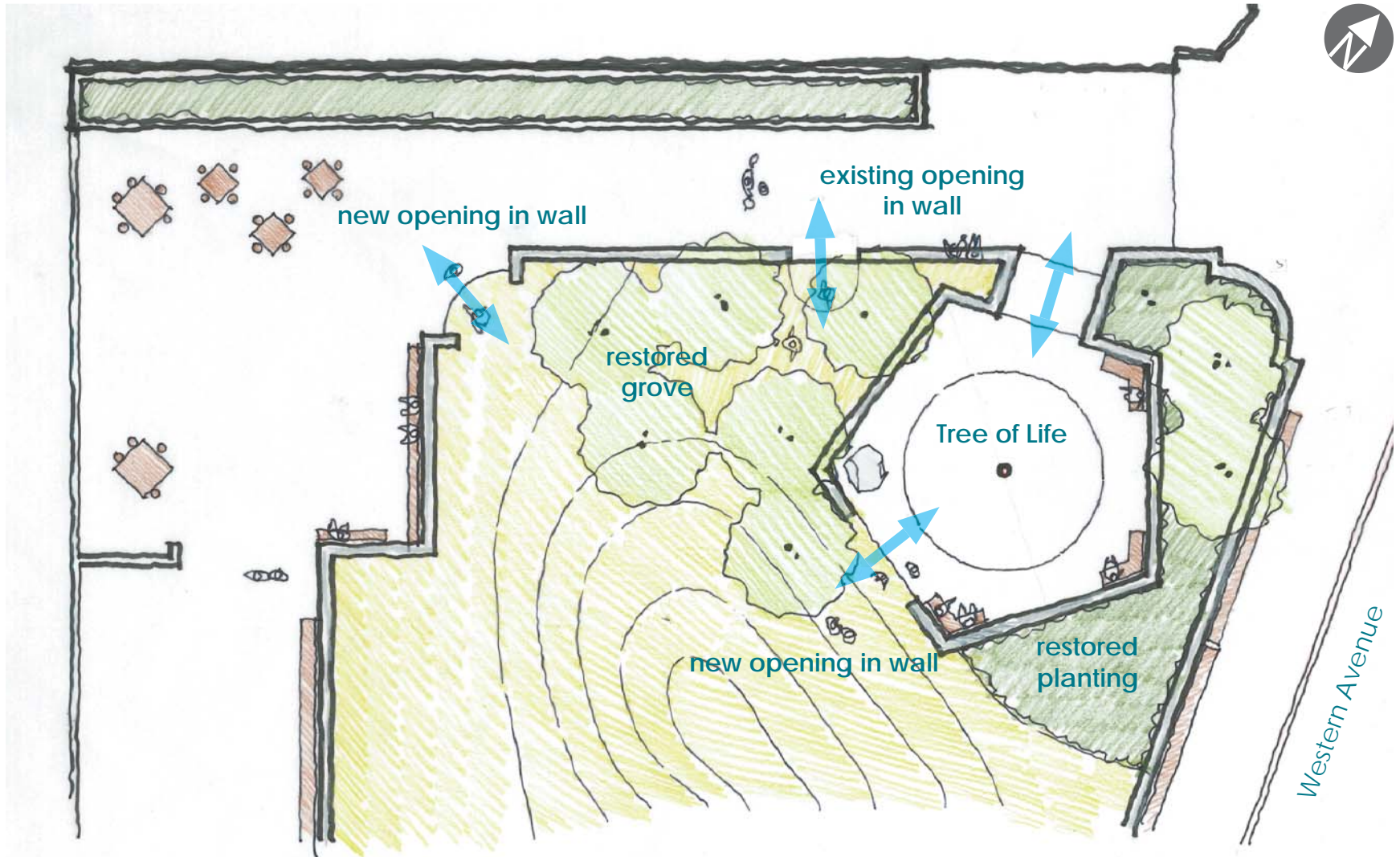
PLAY - OUR GOALS

- Create a play area or opportunity for play
- Adhere to original character of play area - a kid-sized gathering space with natural elements
- “Tree of Life” will remain; could be integrated with play

ORIGINAL DESIGN



OPTION 1 *PLAY / BERMS*

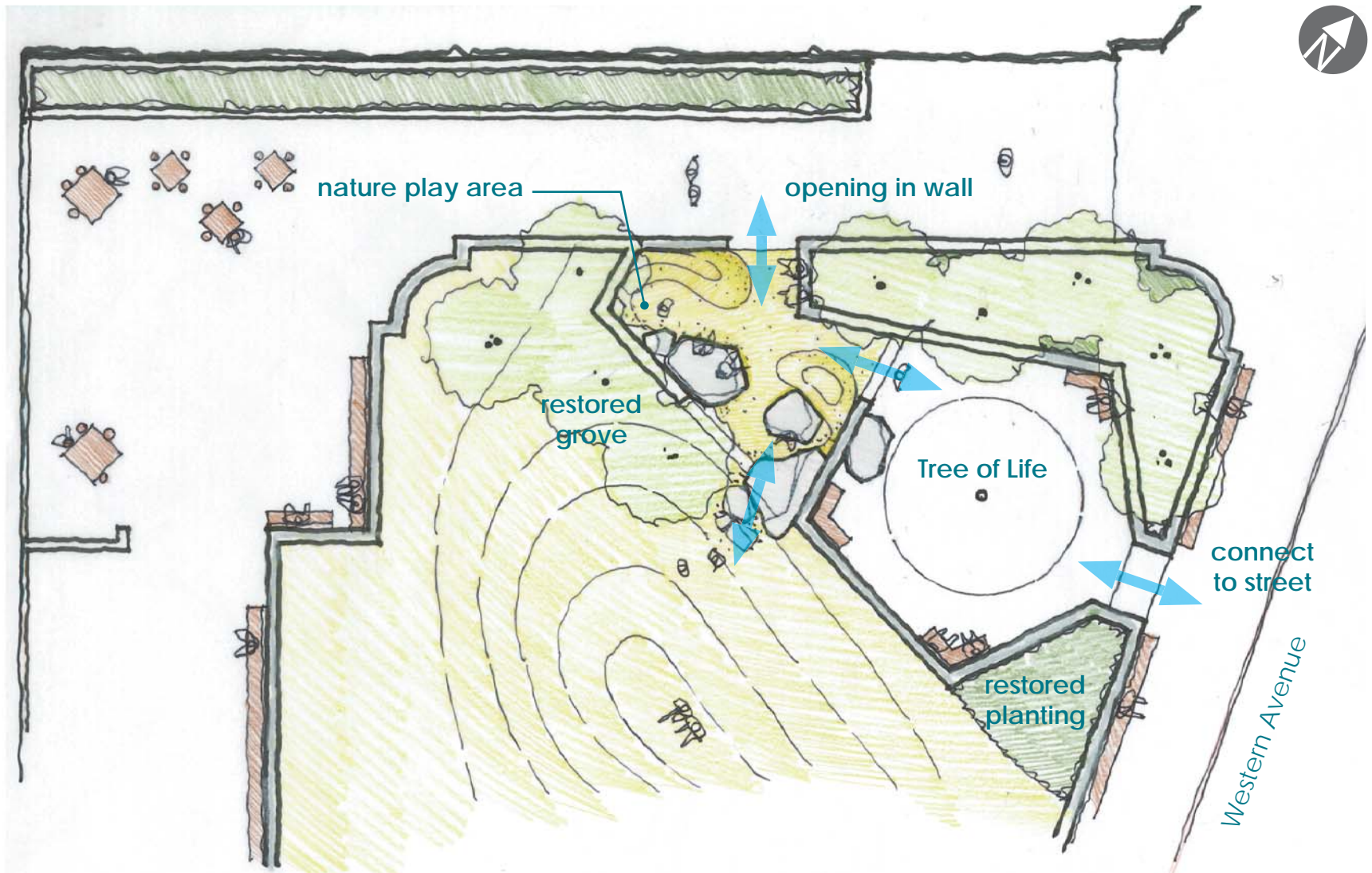




berms

photo by Dave Jacobs

OPTION 2 *SMALL PLAY AREA WITH NATURAL ELEMENTS*



OPTION 2



GATHERING

GATHERING

planned

- political & social rallies
- concerts & presentations
- markets & fairs
- activities (e.g. painting)*
- storytelling*
- buskers
- organized picnics
- cultural gatherings & celebrations
- memorials



spontaneous

- market visitors
- hang-out spot for friends
- community meeting point
- downtown residents & shoppers



OPEN HOUSE 1 - GATHERING

1

Should a part of the park be redesigned to better accommodate small group gatherings?

yes

96

no

66

Public Open House, Pop Up and Online Survey Results
May 2016

LARGE GATHERINGS



Grand, great views

- hanging out, people-watching
- performances & events

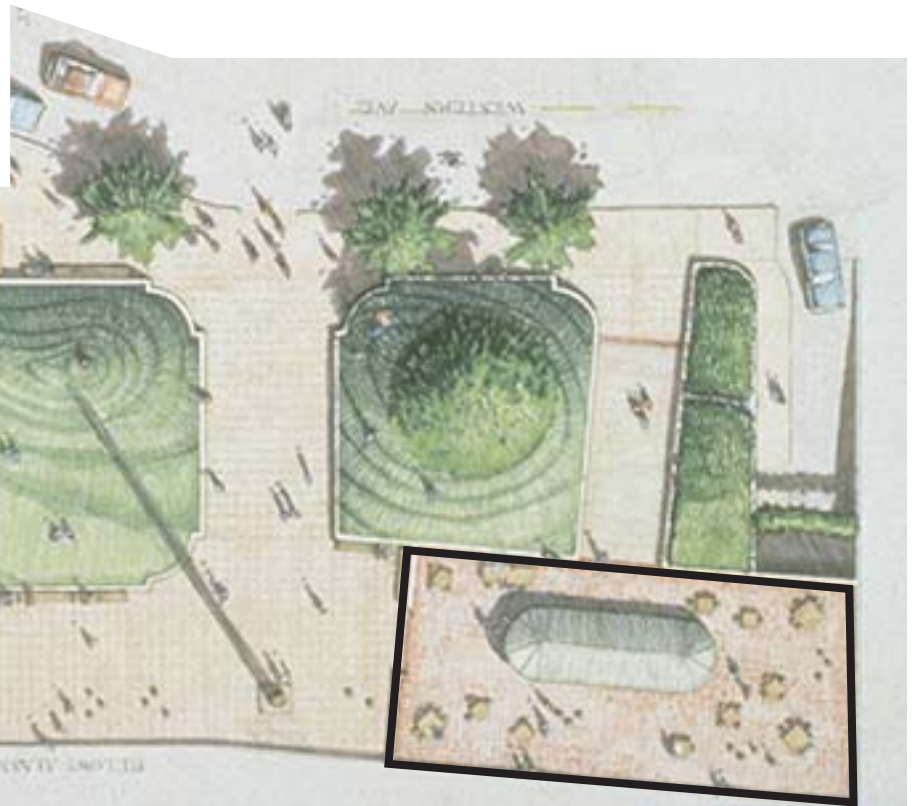


SMALL GATHERINGS



Improve original picnic areas

- unique materials & amenities
- more flexible
- more comfortable



GATHERING SUMMARY

Reinforce design intent:

- Restore and improve quality in the two picnic areas

Support planned gatherings & events:

- Improve access
- Improve flexibility
- Create logical areas for small events to occur

FURNISHINGS



benches



stools



tables

OPEN HOUSE 1 - FURNISHINGS

1 Should there be more types of furnishings for socializing and eating?

yes	no
146	30

Public Open House, Pop Up and Online Survey Results
May 2016

BENCHES



STOOLS

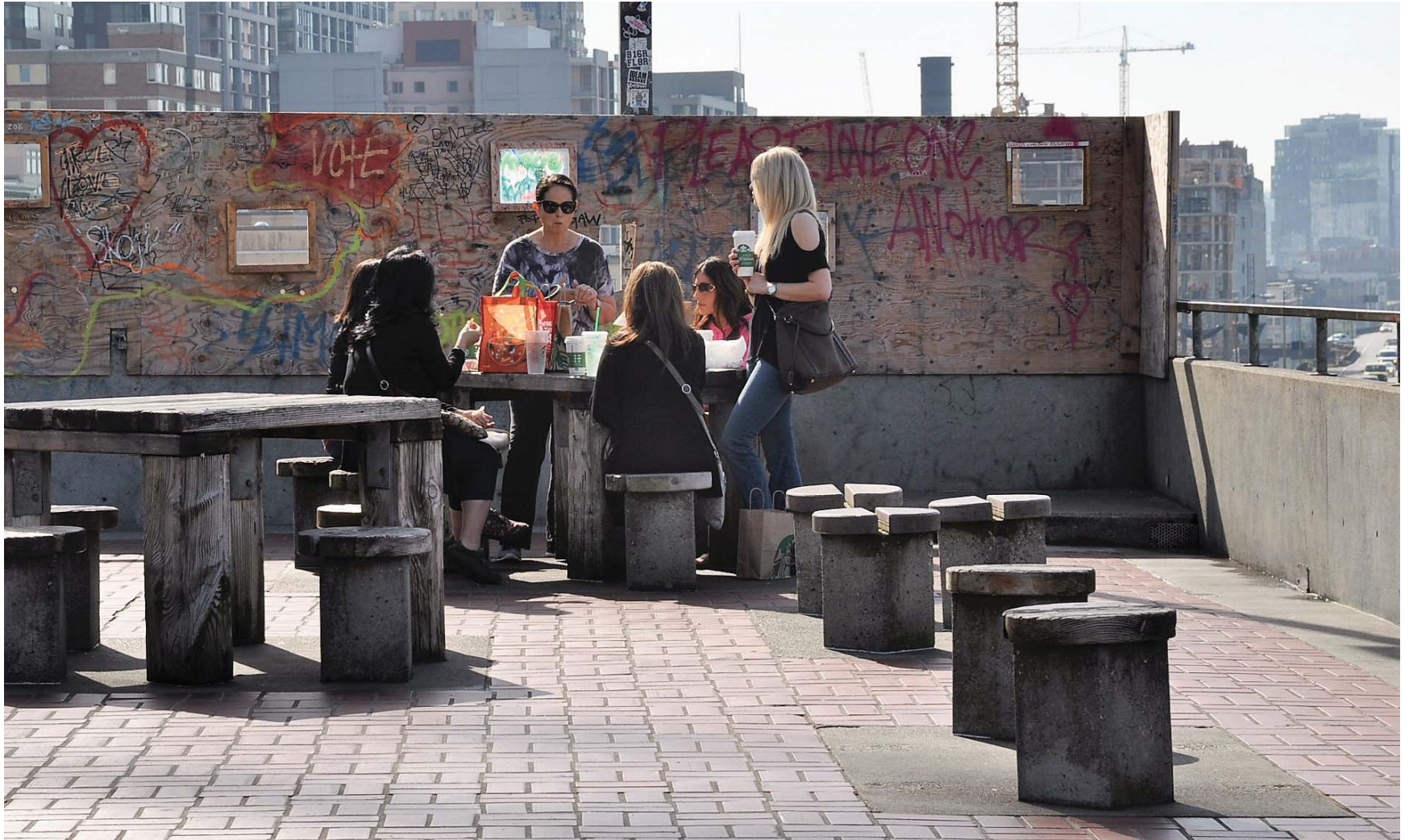


remove isolated stools

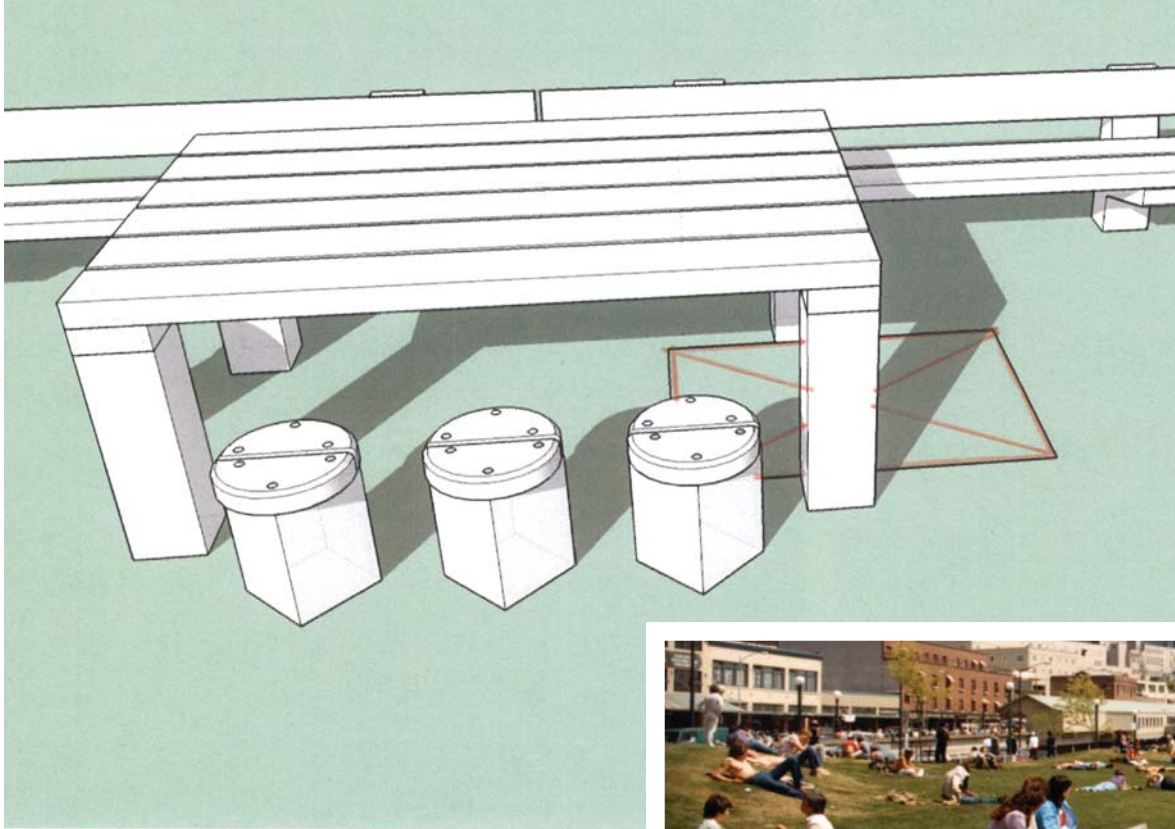
new bases/ attachments

consider fixed wooden chairs instead of stools

TABLES



TABLES



space for wheelchairs

some armrests

multiple configurations

different sizes

alternate shapes

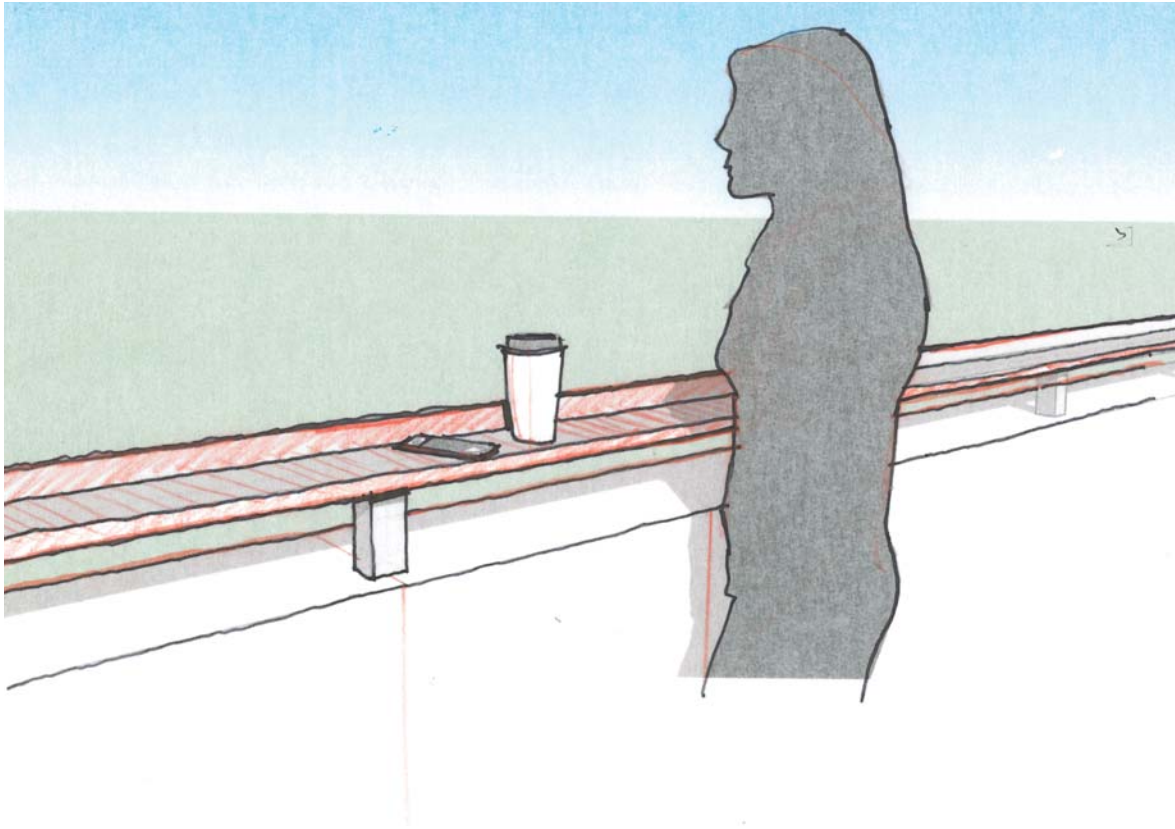
round

L shaped

long rectangles



GUARDRAILS



small shelf / counter
at updated guardrails

MOVABLE TABLES & CHAIRS



FURNISHINGS SUMMARY

Our Goals:

Reinforce Original Design Intent and Character:

- Maintain solid, simple design with natural wood

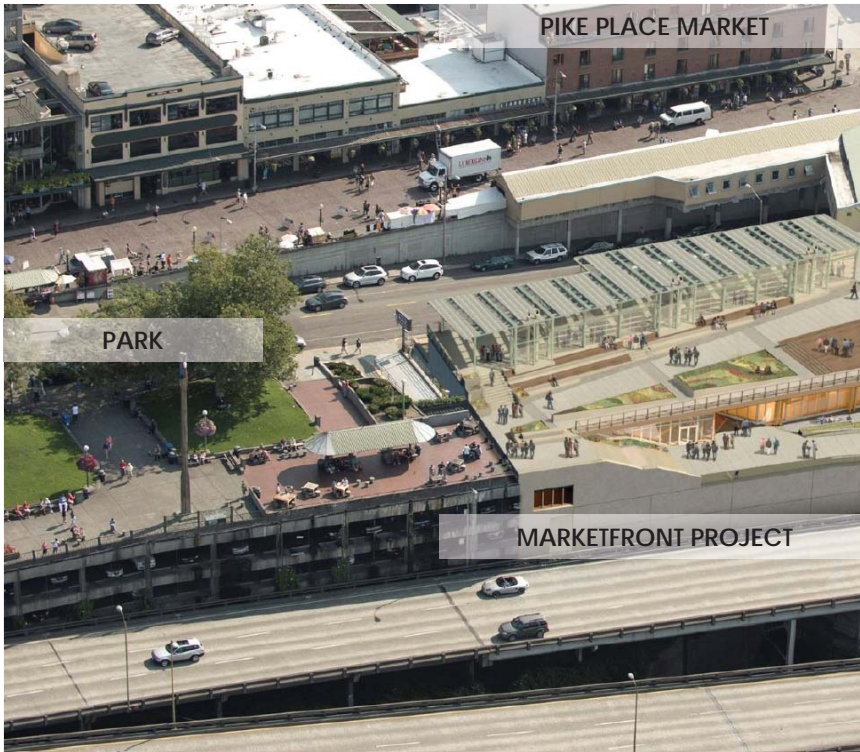
Incorporate Current Best Practices:

- Increase comfort
- Meet accessibility guidelines
- Improve durability

MARKETFRONT CONNECTION

2017

MarketFront Project complete late 2016 / early 2017



FUTURE CONDITON

Overlook Walk to Alaskan Way



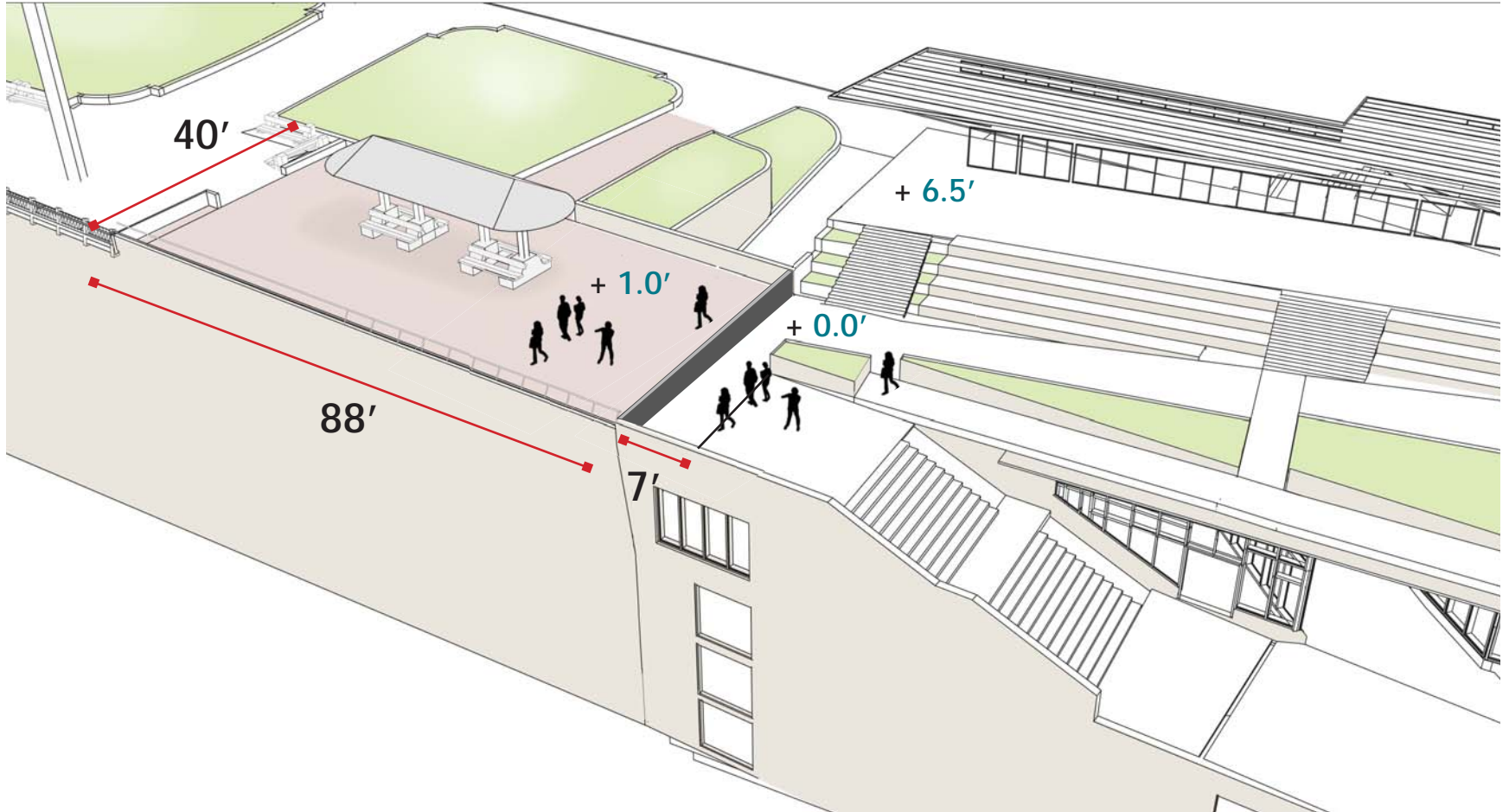
OPEN HOUSE 1 - CONNECTION

1 Should the renovation include a direct connection to MarketFront?

yes	no
179	9

Public Open House, Pop Up and Online Survey Results
May 2016

MARKETFRONT ADJACENCY

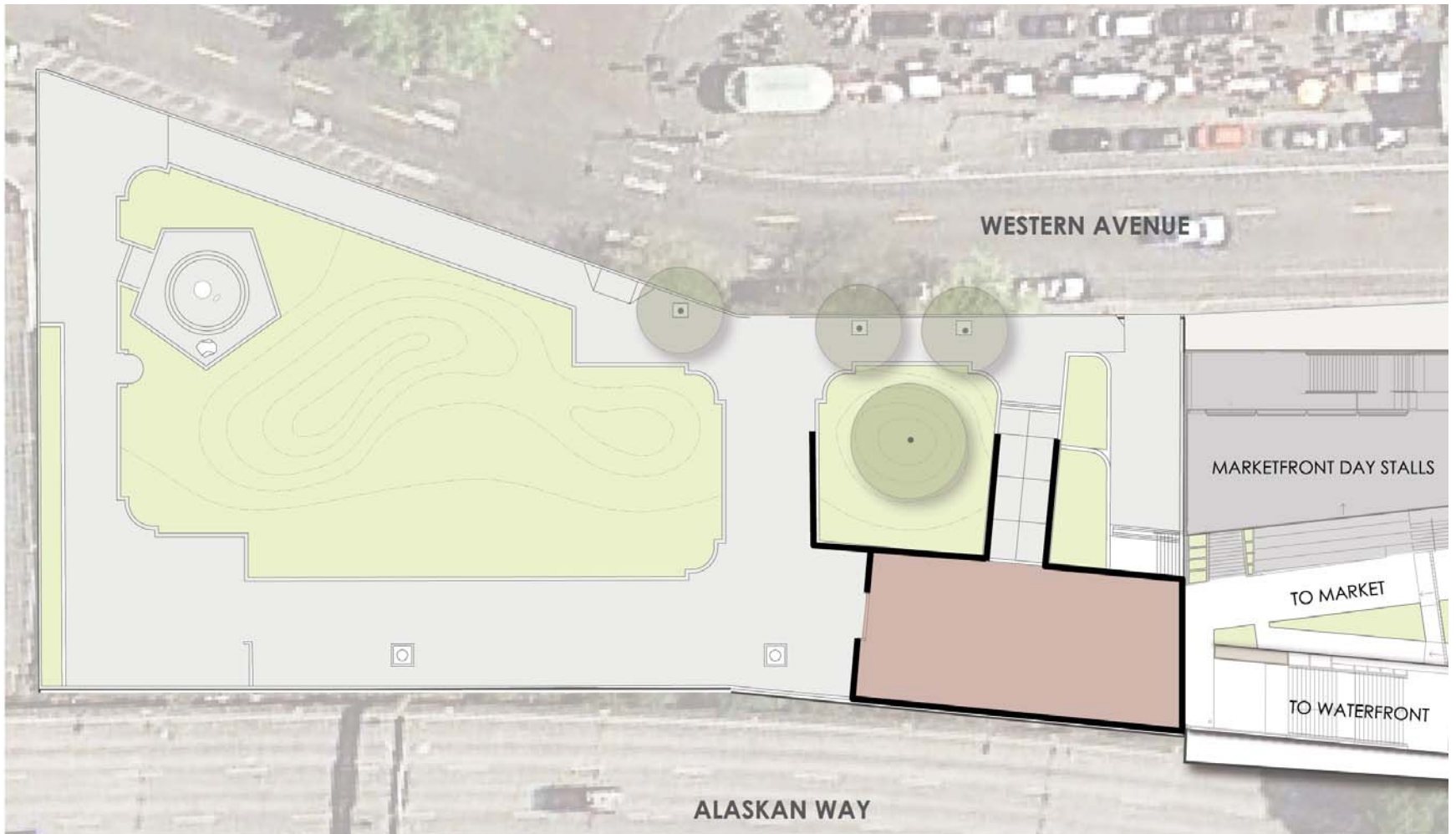


MARKETFRONT CONNECTON - OUR GOALS

Create a connection that:

- reinforces Park/ Market relationship
- helps the park remain well used - part of evolving City context
- contributes to social justice:
connects park users to MarketFront services & amenities
- increases accessibility and ease of circulation around the Market

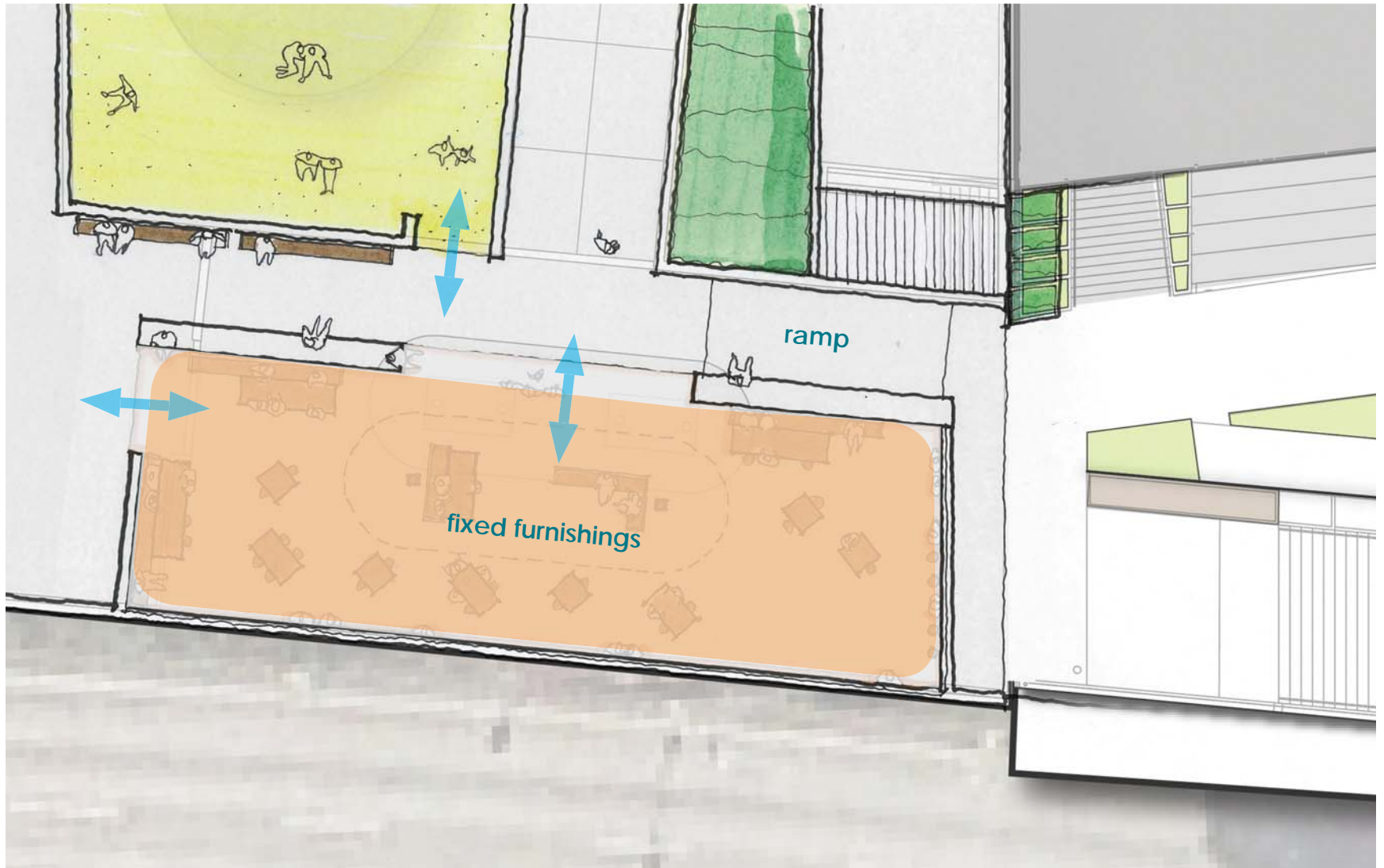
NO CHANGE TO PARK



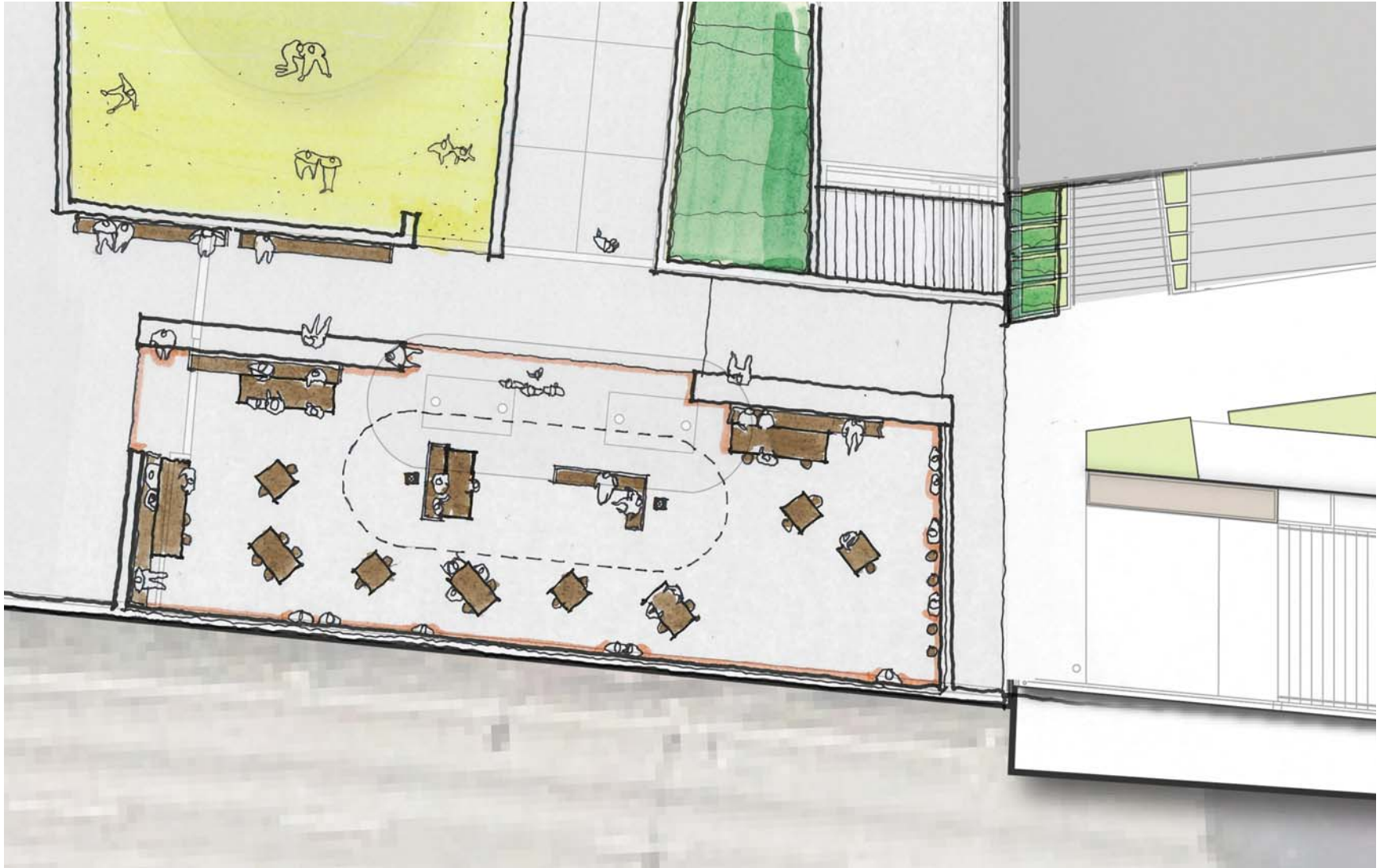
OPTION 1 - STRAIGHT PATH



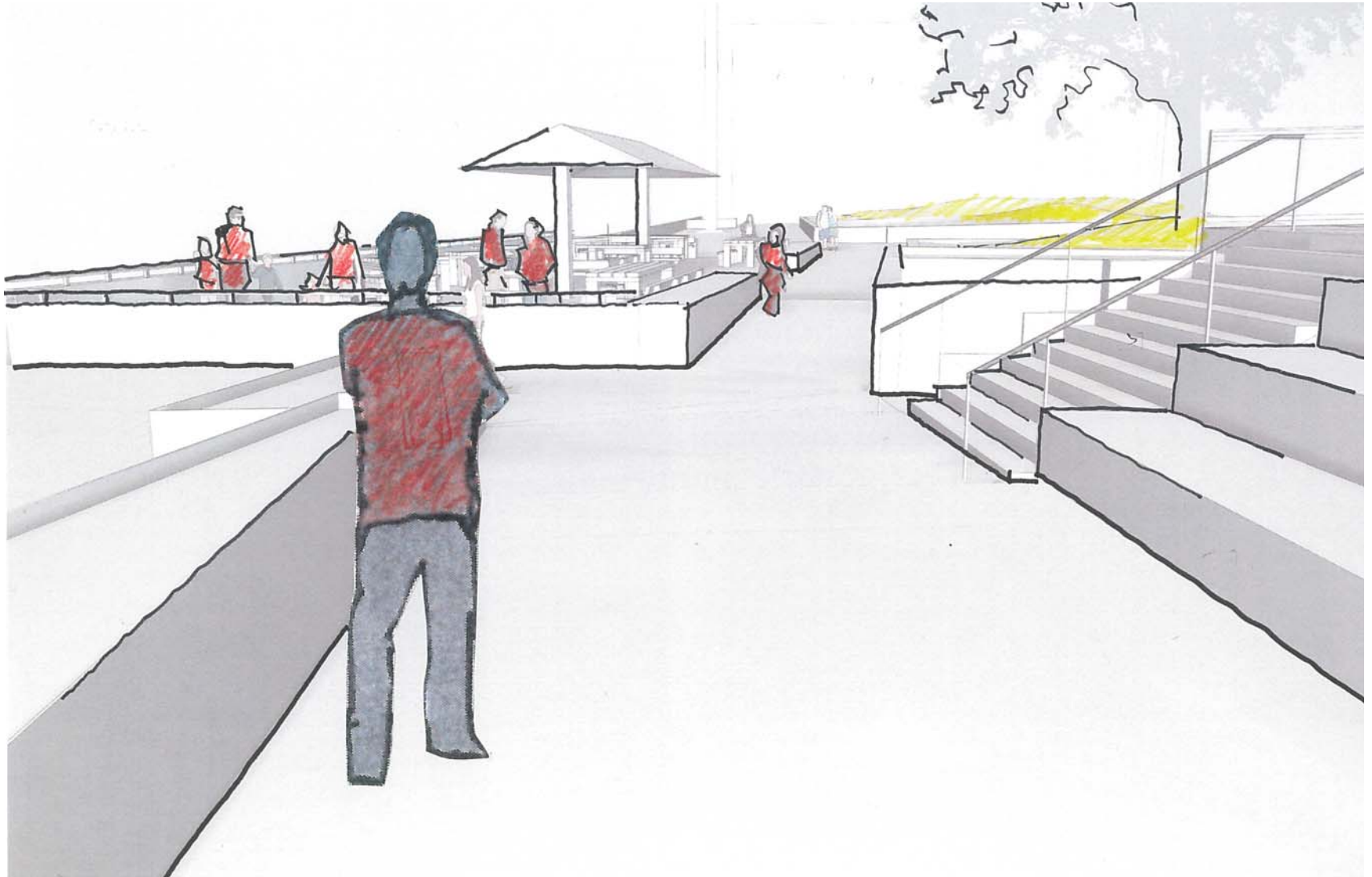
OPTION 1 - STRAIGHT PATH



OPTION 1 - STRAIGHT PATH



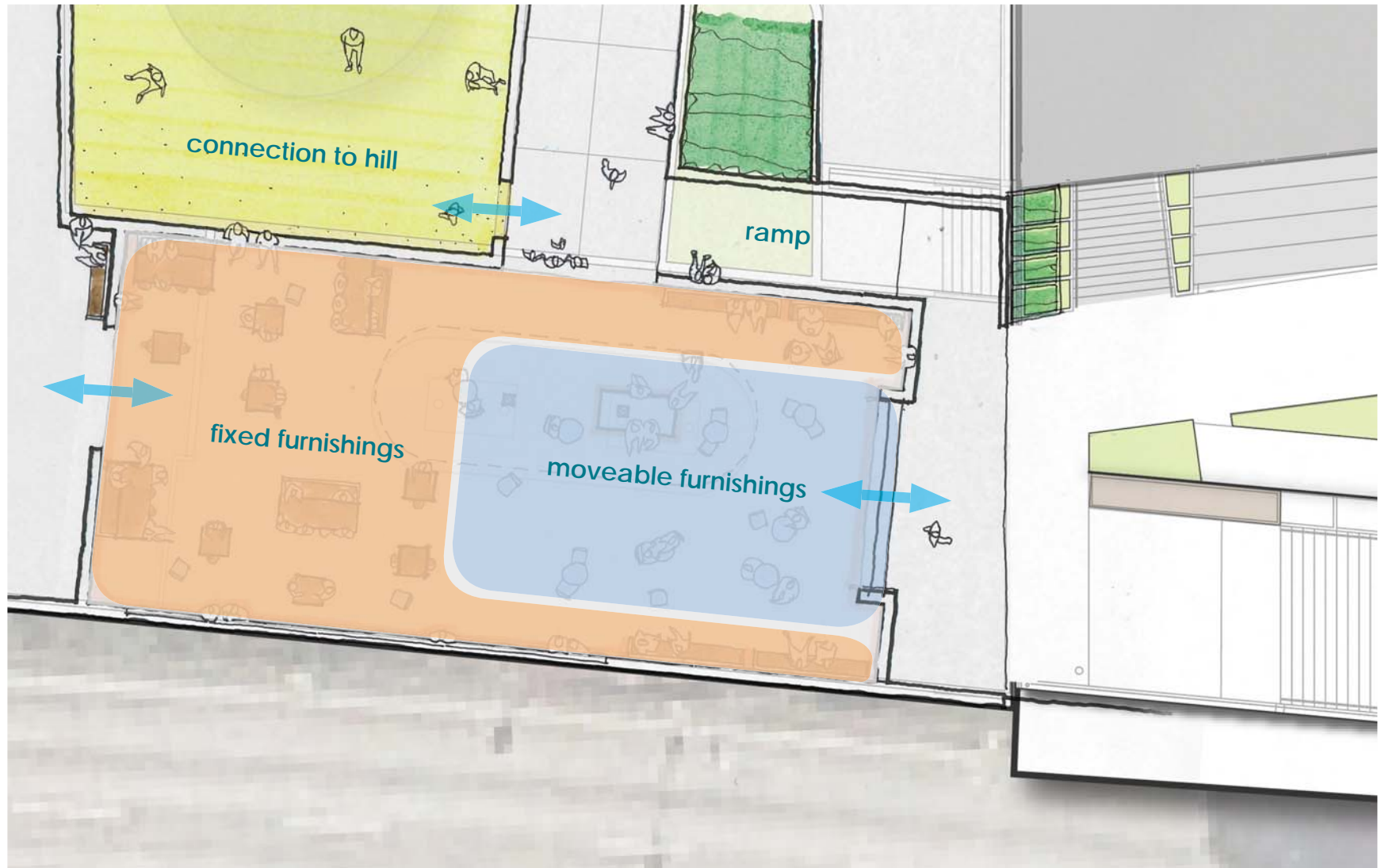
OPTION 1 - STRAIGHT PATH



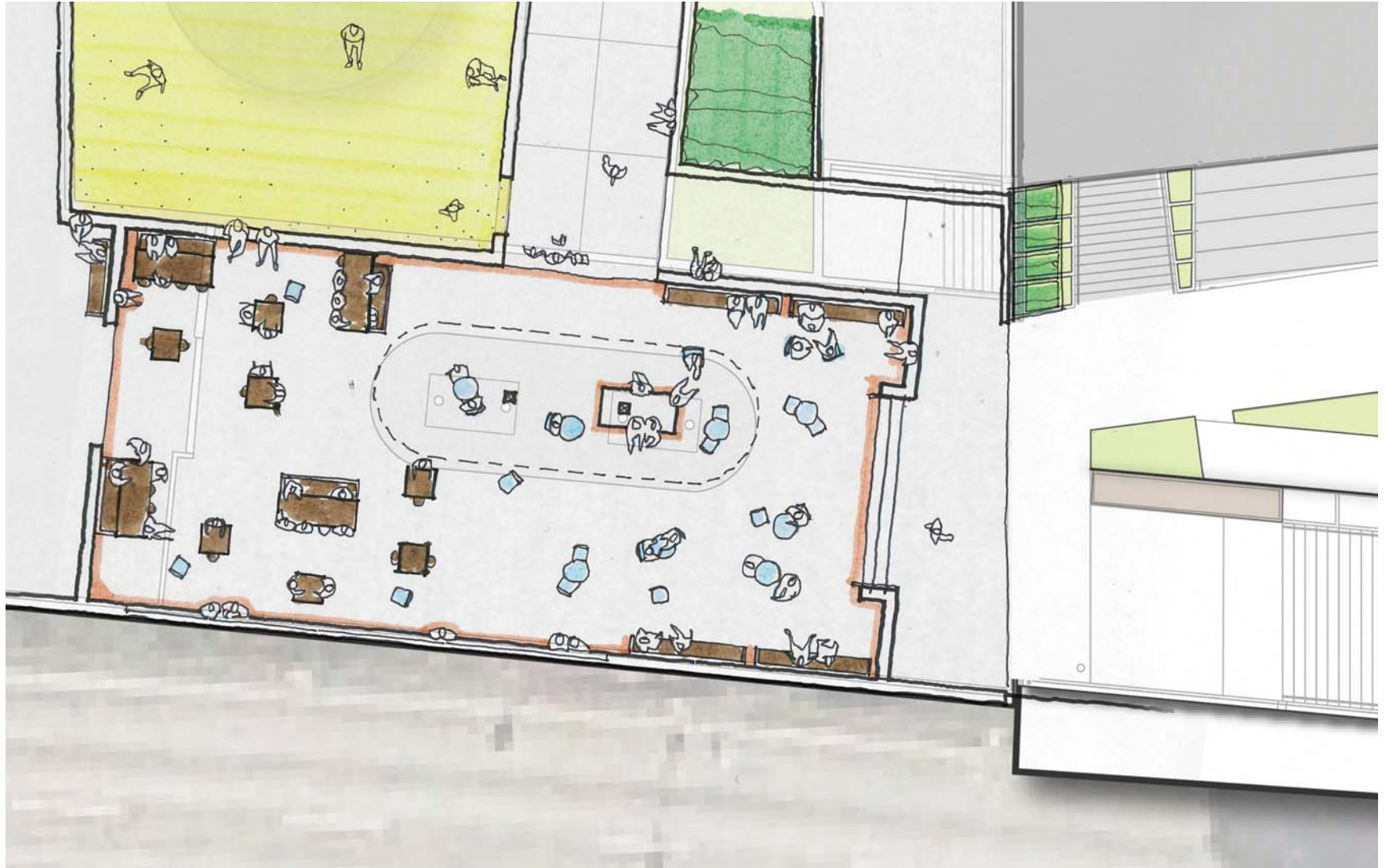
OPTION 2 - DISPERSED CONNECTION



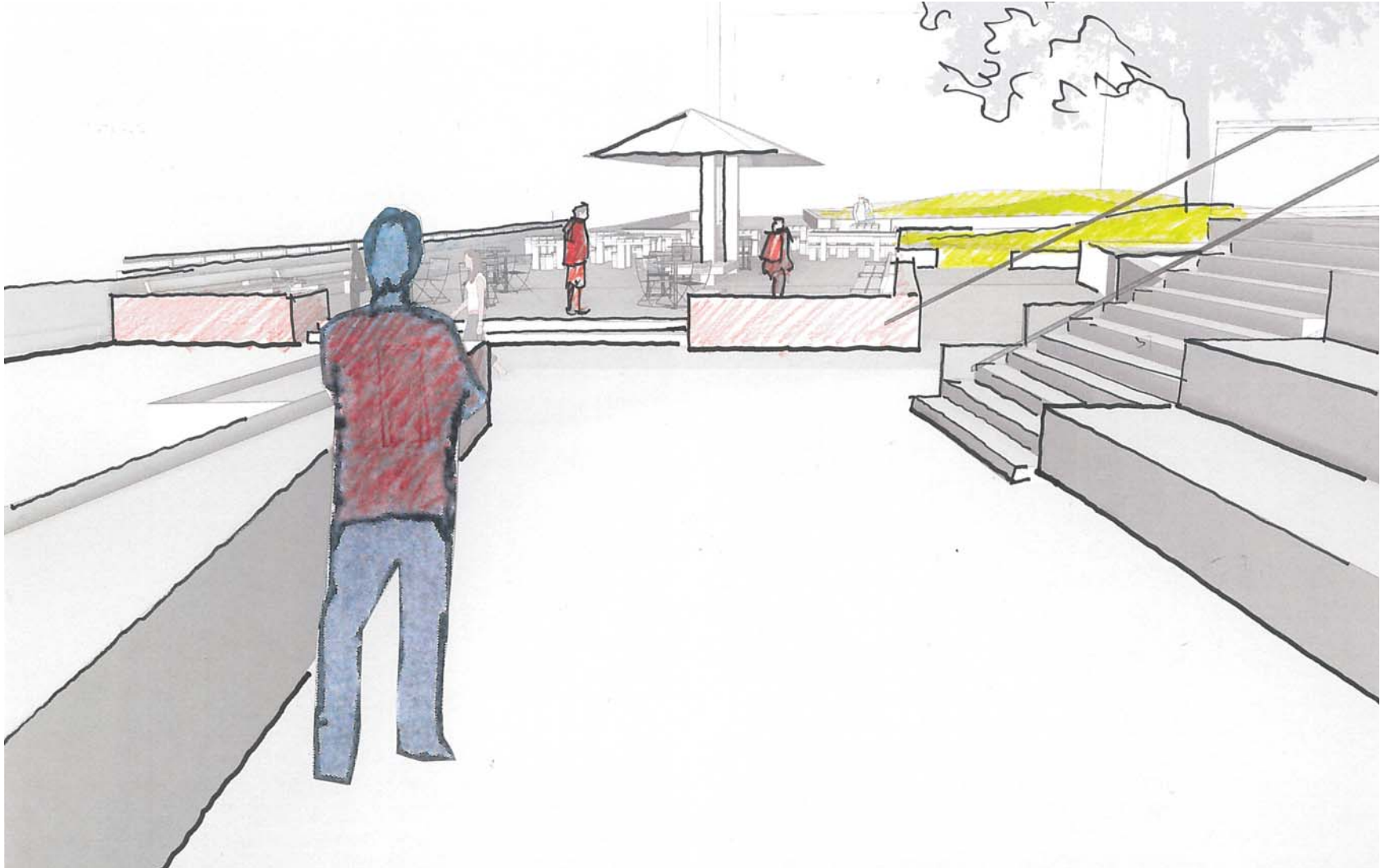
OPTION 2 - DISPERSED CONNECTION

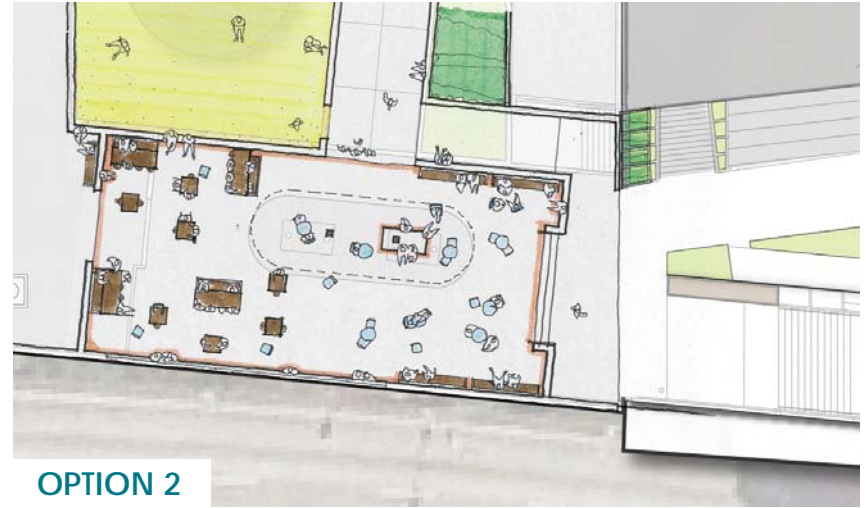
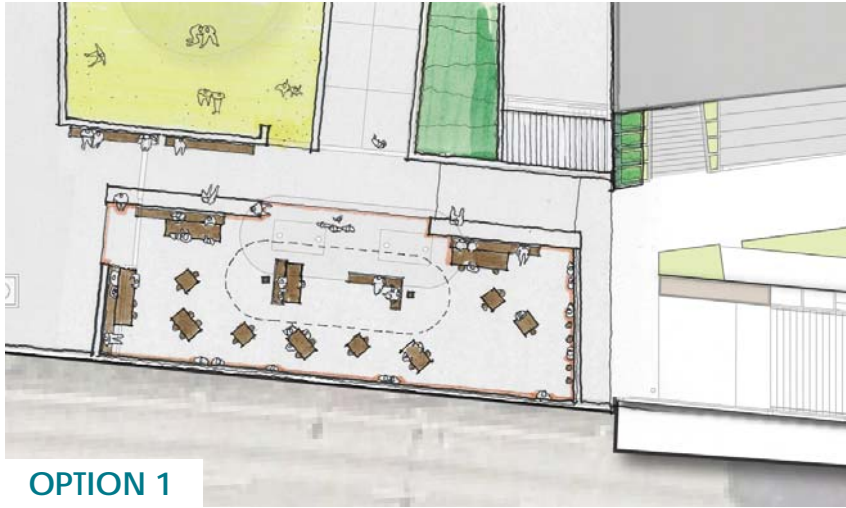


OPTION 2 - DISPERSED CONNECTION



OPTION 2 - DISPERSED CONNECTION





LIGHTING

EXISTING LIGHTING



LIGHTING - OUR GOALS

- Welcome people to the park in the afternoon / evenings
- Correct light levels throughout
- Correct color temperature throughout
- Minimize contrast between light/ dark
- Enhance wayfinding
- Ensure a holistic aesthetic

PROPOSED LIGHTING

Pole

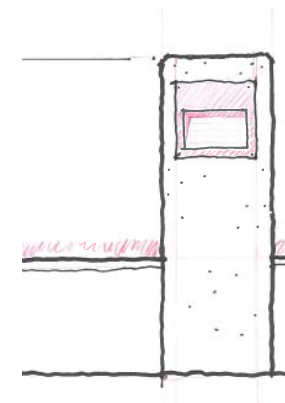
EXISTING



PROPOSED



Bollard



Supplemental lighting



NATIVE AMERICAN CULTURE

OPEN HOUSE 1 - NATIVE AMERICAN CULTURE

1 Should the project do more to recognize Native American cultures?

yes	no
163	50

Public Open House, Pop Up and Online Survey Results
May 2016

NATIVE AMERICAN OUTREACH

Victor Steinbrueck Park IMPROVEMENTS



Victor Steinbrueck Park Renovation is a Seattle Parks & Recreation project to improve the park for all. It will be partially funded by the 2008 Parks and Green Spaces Levy, which suggested improvements to sight lines, children's play, seating, lighting, and landscaping.

OUTREACH TO Native American Community

We are approaching this work at Victor Steinbrueck Park with extreme sensitivity, extreme compassion, and extreme understanding to Seattle's Native American community.

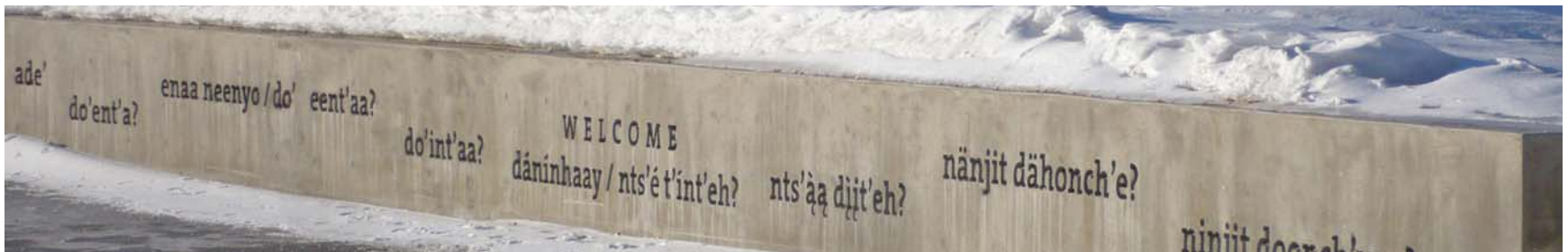


Native American Outreach - Seattle Indian Health Board
August 2016

DESIGNS, PATTERNS, NATURAL MATERIALS



LANGUAGE



STORY-TELLING



NATIVE AMERICAN ART





END | DISCUSSION

<https://vspark.participate.online/>